

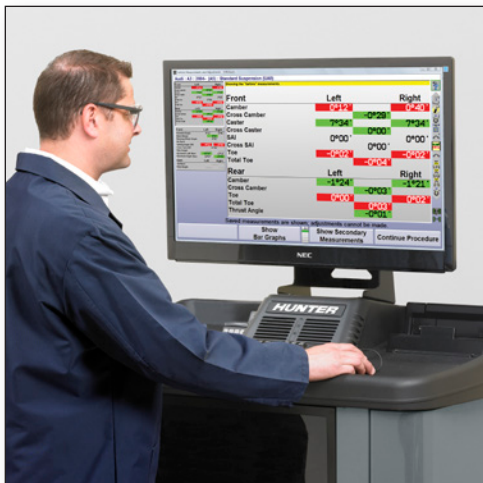
VAS 6292 Alignment Systems

Customized for Volkswagen, Audi, Porsche, SEAT, Škoda and Bentley vehicles



VAS 6292 (ASE 423 120 00 000) systems offer greater profit and productivity

VAS 6292 alignment systems feature Hunter HawkEye Elite® technology, improving the speed, ease and accuracy of alignment service.



Customized V.A.G software

- ✓ Provides simple, vehicle-specific measurement and adjustment instructions
- ✓ Includes steps necessary for proper alignments on all Volkswagen Group vehicles

EXCLUSIVE

QuickComp

- ✓ Compensate all wheels and capture initial measurements in one motion

High-resolution cameras

- ✓ Provides pinpoint accurate measurements and instant adjustment updates



PATENTED

Accelerate service and setup times with QuickGrip® adaptors

Extremely fast installation



- ✓ Spring-loaded adjust easily to wheel size
- ✓ Single lever locks the clamp – no knob twisting
- ✓ Off-center clamping has no effect on accuracy



Low maintenance

- ✓ Shop-tough polymer structure withstands drops
- ✓ No electronics, cables or calibration
- ✓ Only occasional cleaning required



Avoid damage to expensive rims

- ✓ Grips tire, not rim
- ✓ No metal-to-metal contact
- ✓ Only protective ring contacts rim

HawkEye
Elite



2.72 kg
(6 lbs.)

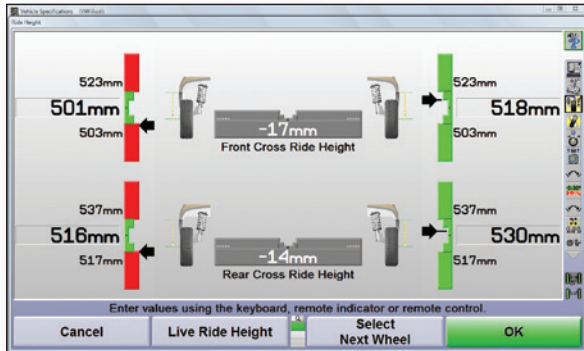


7.25 kg
(16 lbs.)

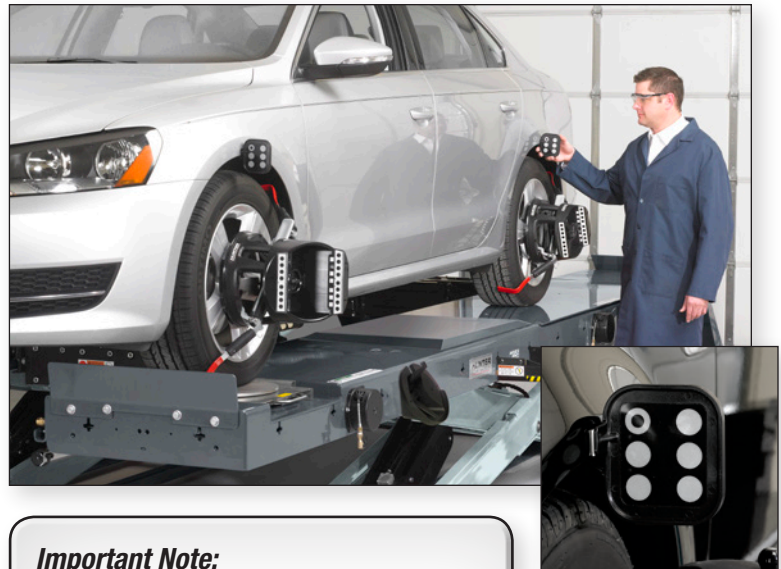
ESTIMATED 8-MINUTE SAVINGS!

Exclusive Live Ride Height feature provides exact measurements in seconds

Hunter's Live Ride Height Measurement System automates ride height measuring procedures as specified by Volkswagen and Audi. Accurate to one millimeter, Live Ride Height instantly displays measurements compared to vehicle specifications.



Color-coded bar graphs show adjustments needed to set ride height within the vehicle's specifications.



Important Note:

All new Volkswagen Group vehicle models require ride height to be measured.

Live Ride Height Targets (20-2050-1)

VAS 6292/5,
ASE 423 125 00 000

ESTIMATED 7-MINUTE SAVINGS!

PATENTED

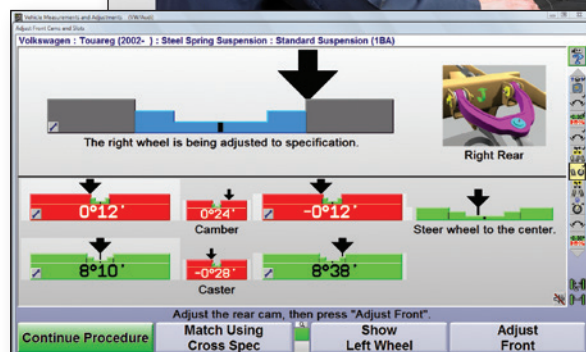
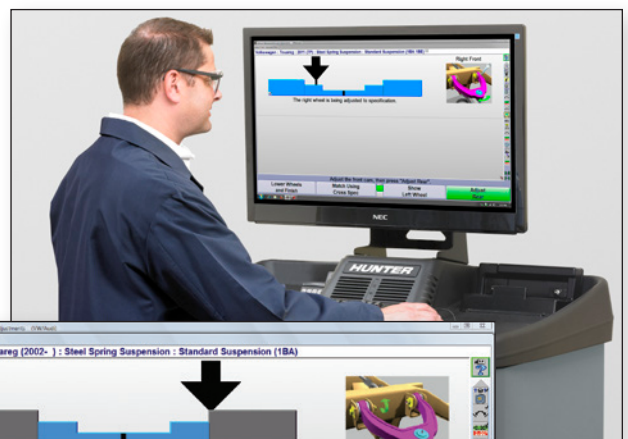
CAMM® takes the guesswork out of VW Touareg dual-cam camber and caster adjustment

CAMM® (Control Arm Movement Monitor) tracks live camber and caster measurements for precise front and rear cam adjustment.

- ✓ Computes the exact mechanical geometry of the vehicle, so correct adjustments can be made on the first try
- ✓ Easily switch between front and rear control arms to fine-tune the adjustment
- ✓ Display current camber and caster measurements for reference

Without CAMM®, adjusting control arm camber and caster is trial and error!

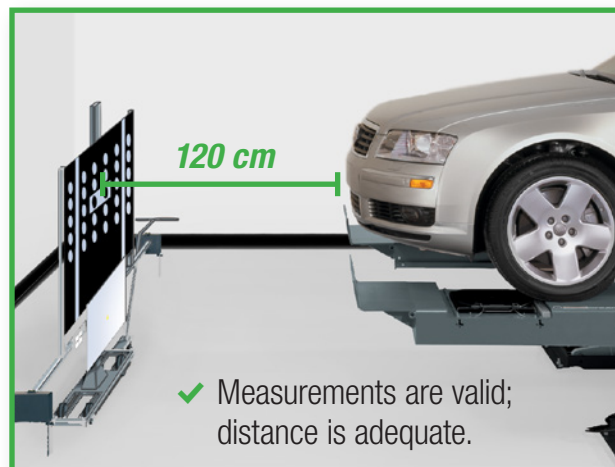
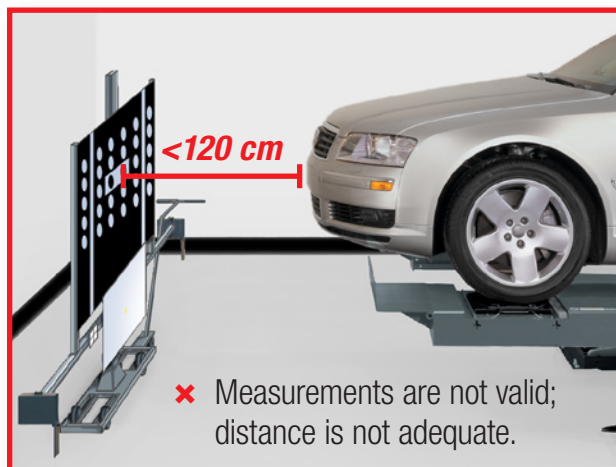
CAMM® adjustments with camber and caster measurements displayed for reference.



ESTIMATED 5-MINUTE SAVINGS!

ADR, ACC and LDW calibration faster and easier

If your alignment bay is too short to accommodate the VAS 6430 calibration fixture, Hunter's VAS 6292 Alignment System offers a solution. If the bay or lift configuration allows, the vehicle can be rolled rearward on the lift/rack until the required distance is obtained.

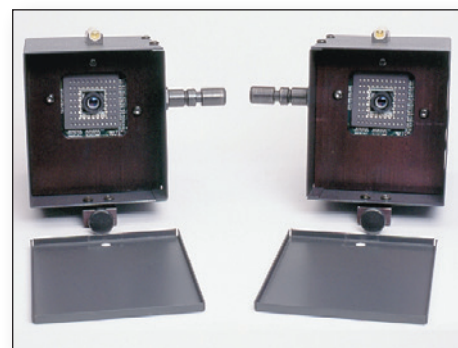


Adaptive Cruise Control (ACC) or Automatic Distance Regulation (ADR) measurement procedures utilizing optional HE421 radar aiming cameras.



VAS 6430 ADR/ACC/LDW/Night Vision Fixture

VAS 6430 is available through your VAG equipment supplier.



*Hunter radar aiming camera kit (20-2814-1)
VAS 6292/1, ASE 423 121 00 000*

Important Note:

V.A.G requires ADR/ACC/LDW/Night Vision calibration whenever vehicle alignment is adjusted.

VAS 6292 console options

Recommended VAS 6292 equipment package*

WinAlign® WA600 or WA500 Series with premium large cabinet and 27 or 24 inch LCD monitor (WA680VEVAGE shown)

Computer includes:

- ✓ Current WinAlign® software
- ✓ Electronic software authorization key for VAG software
- ✓ Two years of Vehicle Information Database updates
- ✓ Two-year subscription to HunterNet® featuring WebSpecs®
- ✓ 3.7 GHz Intel® Core™ i3 processor
- ✓ 4 GB RAM
- ✓ 250 GB SSD (or greater) hard drive
- ✓ Single DVD/CD-RW drive
- ✓ USB 3.0/2.0
- ✓ Network module
- ✓ Wireless network module
- ✓ Mouse
- ✓ Windows® 10

Standard Accessories:

- ✓ Handheld wireless remote control
- ✓ Steering wheel holder
- ✓ Brake pedal depressor
- ✓ Select one of the following camera sensor types: WM, FM or CM
- ✓ Wide-angle three-dimensional targets and QuickGrip® adaptors
- ✓ Digital-Photo
- ✓ Digital-Video
- ✓ Keyboard**
- ✓ iShop™ and ASANet™ compatible

Optional Accessories:

- ✓ Live Ride Height Targets (20-2050-1)
VAS 6292/5, ASE 423 125 00 000
- ✓ Radar Alignment System Kit for LDW/ADR/ACC adjustment (20-2814-1)
VAS 6292/1, ASE 423 121 00 000
- ✓ HP color printer



WA680VEVAGE
*shown with 27 inch
LCD monitor*



WA670VEVAGE
*shown with 24 inch
LCD monitor*

* All new configurations include a 3-year warranty on PC and installed components.

** If language is other than English, German, Spanish, or Russian, then keyboard is not provided.

Choose the right sensor package for your shop!

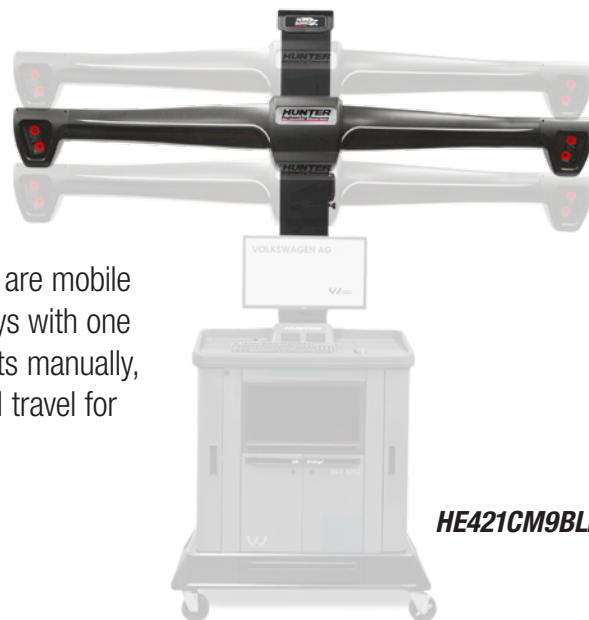


HE421WMBLKE

Wall- and ceiling-mounted configurations are perfect when space is at a premium.



HE421CM9BLKE



HE421CM9BLKE



HE421FM9VAGE

Floor-mounted overhead camera configuration is suitable for drive-through applications.

RX Scissor Alignment Lift ***(VAS 791 001; ASE 791 001 80 000)***

RX45KIS-435VE
shown with options



The RX scissor design requires minimum bay length, provides clear access to the vehicle and jacks, and offers optional features to improve productivity.

Standard features

- ✓ 4536-kg (10000-lb.) capacity
- ✓ Best-in-class drive-on height
- ✓ Ratcheting safety locks ensure level at all lock positions
- ✓ High-speed rise and descent available on select models
- ✓ Extended wheel stops on surface-mounted models

Optional features

- ✓ PowerSlide® operates turnplates with the touch of a button. VAS 791 001/1; ASE 791 002 80 A00
- ✓ Inflation Station sets tire pressure for each wheel simultaneously
- ✓ Fully Integrated Alignment (FIA) capability allows direct communication with the aligner to automate lift features
- ✓ AlignLights provides an efficient light source underneath the vehicle
- ✓ Space-saving, shallow-pit installation sets the runways flush to the floor when fully lowered

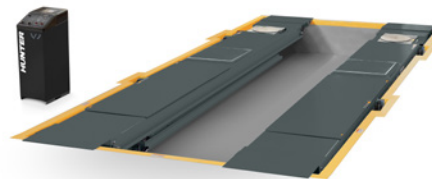
WinAlign® software upgrades may require additional and/or upgraded hardware.

Because of continuing technological advancements, specifications, models and options are subject to change without notice.

WinAlign, WebSpecs, HunterNet, CodeLink, HawkEye Elite, QuickGrip and PowerSlide are registered trademarks of Hunter Engineering Company.



RX45KFIS-435VE shown



Models

RX45KIS-435VE Surface-mounted lift with Inflation Station and PowerSlide® rear slipplates (230/380/400V, 3Ph, 50Hz)

RX45KFIS-435VE Flush-mounted lift with Inflation Station and PowerSlide® rear slipplates (230/380/400V, 3Ph, 50Hz)

RX45KPS-435VE Surface-mounted lift with PowerSlide® rear slipplates (230/380/400V, 3Ph, 50Hz)

RX45KFPS-435VE Flush-mounted lift with PowerSlide® rear slipplates (230/380/400V, 3Ph, 50Hz)

RX45KIS-215VE Surface-mounted lift with Inflation Station and PowerSlide® rear slipplates (230V, 1Ph, 50Hz)

RX45KFIS-215VE Flush-mounted lift with Inflation Station and PowerSlide® rear slipplates (230V, 1Ph, 50Hz)

RX45KPS-215VE Surface-mounted lift with PowerSlide® rear slipplates (230V, 1Ph, 50Hz)

RX45KFPS-215VE Flush-mounted lift with PowerSlide® rear slipplates (230V, 1Ph, 50Hz)

HUNTER
Engineering Company

www.hunter.com

11250 Hunter Drive, Bridgeton, MO 63044, USA
Tel: +1-314-731-3020, Fax: +1-314-731-0132
Email: international@hunter.com