

# ***VAS 6230BE Road Force® Elite***

*Customized for All Audi, Bentley, Porsche, Seat, Skoda and Volkswagen Vehicles*

**NEW!**

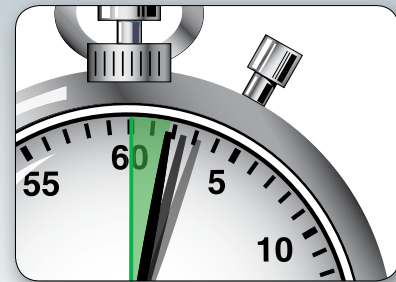


**HUNTER**  
Engineering Company

# VAS 6230BE Road Force® Elite at a glance

**EXCLUSIVE**

Unmatched Speed! .....



- ✓ Perform a **Road Force® test and balance** faster than any traditional balancer!

**PATENTED**

Vision System .....



- ✓ Eliminate error opportunities
- ✓ More information in less time

**PATENTED**

Diagnostic Load Roller



- ✓ Solve vibration problems
- ✓ Identify vehicle pulls
- ✓ Provide "new car ride"



Shown with options



**PATENTED**

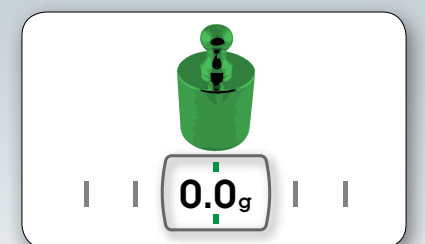
Enhanced SmartWeight® .....



- ✓ Even better balance
- ✓ Maximum efficiency
- ✓ More single weight solutions

**PATENTED**

eCal Auto-Calibration



- ✓ True "self-calibration"
- ✓ No operator input required

**EXCLUSIVE**

HunterNet® .....



- ✓ View balancer usage
- ✓ Track weight usage

**EXCLUSIVE**

On-Demand Videos



- ✓ Simplify training
- ✓ Improve results

**PATENTED**

CenteringCheck®



- ✓ Ensure proper centering
- ✓ Eliminate setup errors

**STANDARD**

Touchscreen Interface



- ✓ Intuitive interface
- ✓ Quickly train new technicians



Road Force® Elite vision technology unlocks more benefits in less time!



Standard Balancer

VS.



Hunter Road Force® Elite

1:15-3:00+ **Floor to floor**

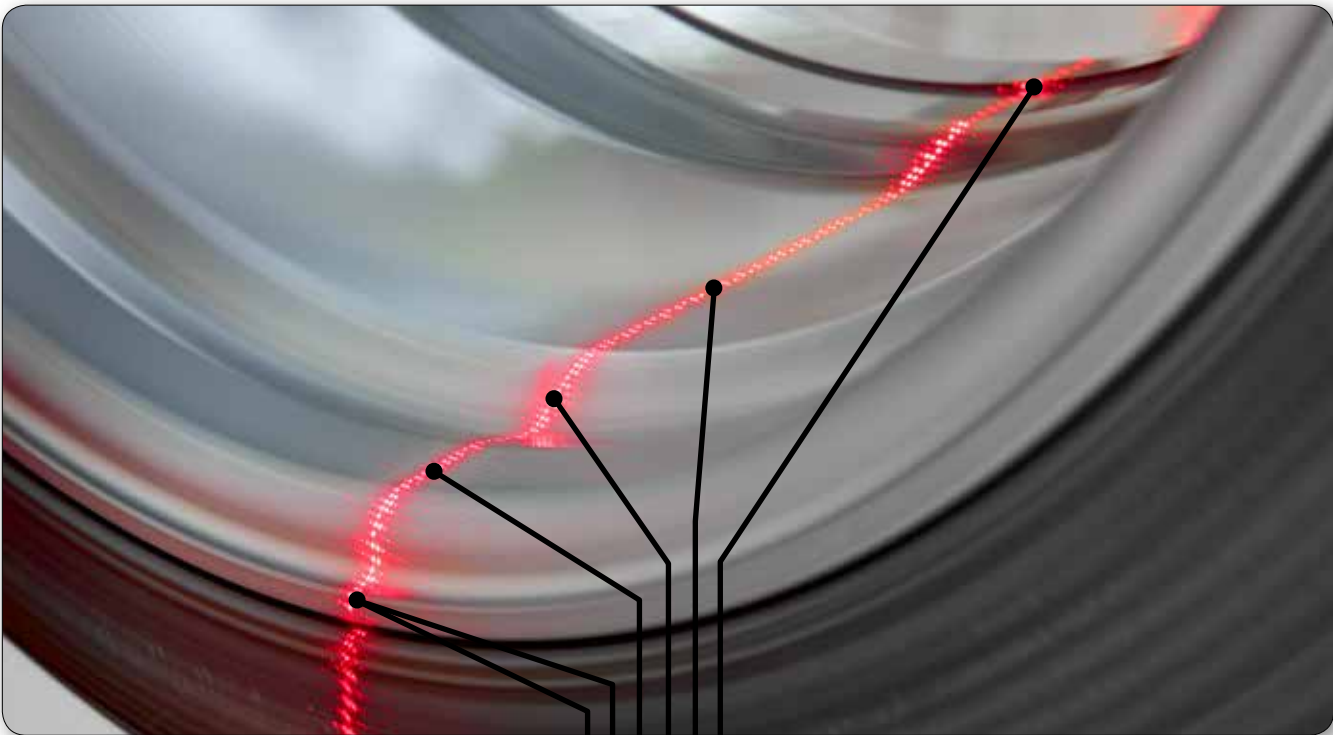
-Plus-

- ☒ Wheel dimensions  
*MANUAL*
- ☒ Weight mode  
*MANUAL*
- ☐ Spoke location
- ☐ Rim profile
- ☐ SmartWeight® optimized
- ☐ Rim runout
- ☐ Road force
- ☐ Tire pull
- ☐ Error-proof
- ☐ Forcematch prediction
- ☒ Unguided balance

1:10 **Floor to floor**

-Plus-

- ☒ Wheel dimensions  
*AUTOMATIC*
- ☒ Weight mode  
*AUTOMATIC*
- ☒ Spoke location  
*AUTOMATIC*
- ☒ Rim profile  
*AUTOMATIC*
- ☒ SmartWeight® optimized  
*AUTOMATIC*
- ☒ Rim runout  
*AUTOMATIC*
- ☒ Road force  
*AUTOMATIC*
- ☒ Tire pull  
*AUTOMATIC*
- ☒ Error-proof  
*AUTOMATIC*
- ☒ Forcematch prediction  
*AUTOMATIC*
- ☒ Guided balance



- Wheel dimensions**  
*AUTOMATIC*  
Automatically determines weight plane locations
- Weight mode**  
*AUTOMATIC*  
Selects clip or tape weight usage
- Rim runout**  
*AUTOMATIC*  
Calculates force-match solution
- Spoke location**  
*AUTOMATIC*  
Automatically hides tape weights behind spokes
- SmartWeight® optimized**  
*AUTOMATIC*  
Allows more single weight solutions
- Rim profiled**  
*AUTOMATIC*  
Creates three-dimensional model of the rim



- Reduce operator error**
- ✓ Automatically measures wheel dimensions
  - ✓ Automatically selects weight mode
  - ✓ Automatically measures rim runout

# Road Force® Elite performs up to 47% faster than previous models



VAS 6230 GSP9712  
(Generations 1 and 2)  
Up to 18 years old



VAS 6230 GSP9722  
(Generation 3)  
Up to 10 years old



VAS 6230 Road  
Force Touch  
(Generation 4)  
Up to 4 years old



VAS 6230 Road  
Force® Elite  
(Generation 5)

Balance and measure  
road force



Balance and repair  
road force



19%  
improvement!



47%  
improvement!

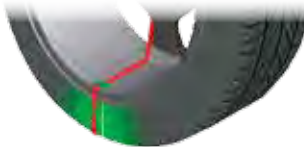
EXCLUSIVE

## Intuitive interface simplifies operation

Balance operation



Switch text language with  
the push of a button



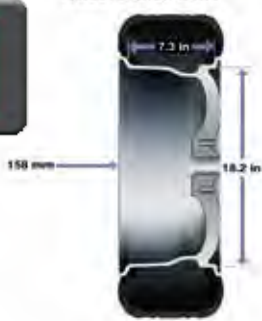
TruWeight™ provides live  
navigation through selection and  
placement of wheel weights



Rim cutaway displays selected  
weight mode



Wheel Dimensions

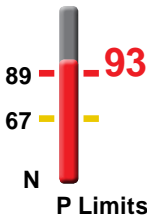


One touch to display rim  
dimensions

Road Force operation



Road Force panel displays  
assembly value and limits



Live rim and tire conditions  
shown on-screen



Simple graphics illustrate how  
to optimize assembly



Color-coding allows operator to  
visualize Road Force variations



# Road Force Measurement® solves common vibration problems

Problem / Solution

Your customer complains about a vibration...



Original Equipment Manufacturer (OEM) technical service bulletins recommend the Road Force Touch® balancer as the vibration solution

A simulated road test pinpoints the problem



The Road Force Touch balancer identifies the tire and rim contributions to radial-force vibration problems

Hold the tire and rotate the rim



Match-mounting the stiffest point on a tire to the low spot on a rim makes the assembly roll as round as possible

Your customer leaves with a "new car ride"!



✓ Your customer experiences a smooth ride on the same tires and wheels

How It Works

An unknown force vibrates the spindle



Vibration is transferred from the wheel, through the spindle to the customer

Specialized sensors detect the vibration



The Road Force Touch balancer detects radial forces with sensitive instruments

Match-mounting cancels the vibration



The Road Force Touch balancer duplicates tire and rim matching methods used by Original Equipment Manufacturers (OEMs)

Your customer leaves with a "new car ride"!

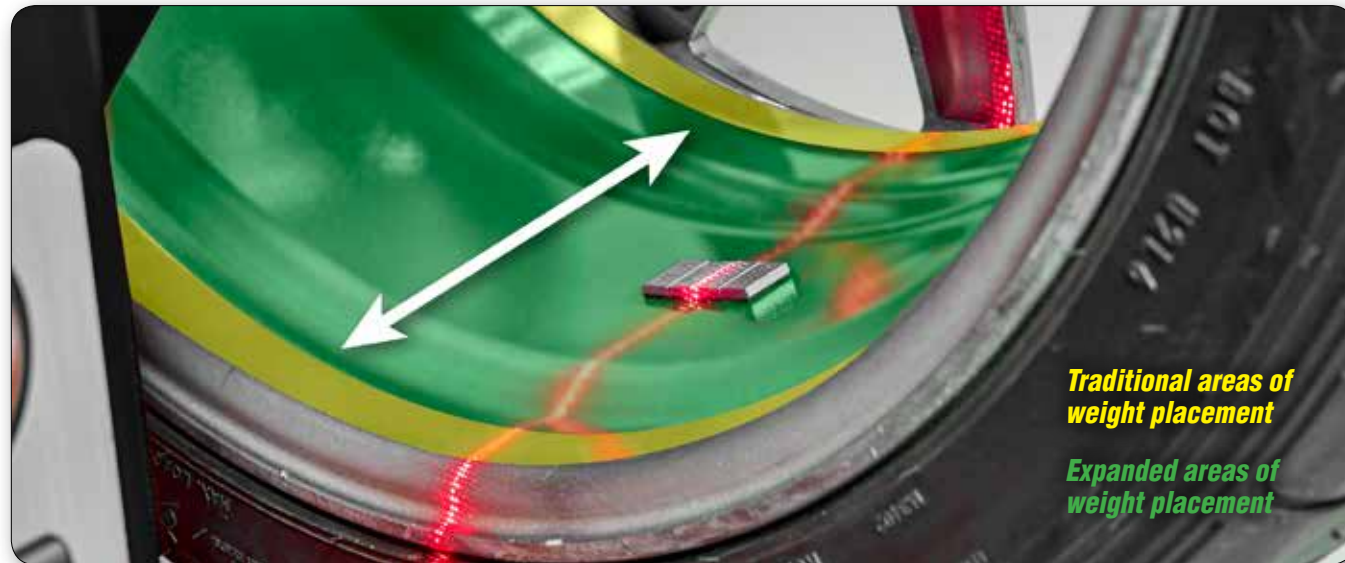


✓ Radial force variation is minimized, ensuring your customer a smooth ride



## Enhanced SmartWeight®

Additional weight locations save time and money



Traditional areas of weight placement

Expanded areas of weight placement

Road Force Elite vision system increases balancer accuracy and single weight solutions.

4

Modern vehicles are **4x** more sensitive to static vibration forces than couple or dynamic forces.

66

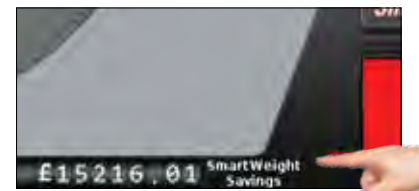
Avoid an average of **66 comebacks** per year by using SmartWeight.

202.1

An average shop saves **202.1 kg** per year with SmartWeight.



Watch Your Savings Grow!



✓ See weight and labor savings based on **your** shop's numbers

PATENTED

## StraightTrak® corrects tire pull

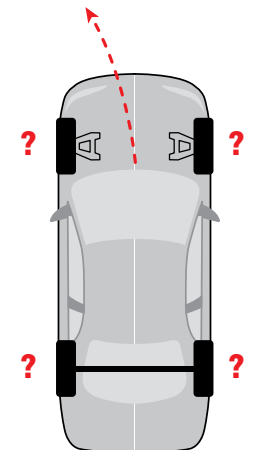
**NEW!**  
Perform lateral force measurement without time penalty

Tires Just Rotated?

Customer complains about vehicle pulling to the left.

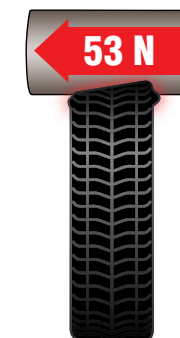


Mysterious Left Pull

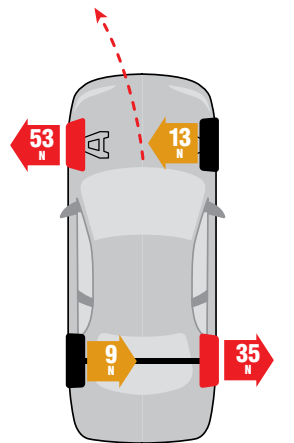


Measure Lateral Force to Identify Pull

Tire conicity can **ONLY** be measured accurately when the tire is under load.



Pull Identified

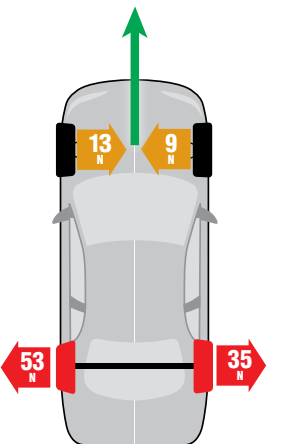


StraightTrak Delivers the Ultimate in Customer Satisfaction



Hunter suggests optimal wheel placement just like OEMs.

Pull Eliminated







COMING SOON!

- ✓ Allows you to view balancer usage online
- ✓ See trends like Road Force values and wheel types being serviced
- ✓ Track wheel weight usage and savings



## GSP9700.com complimentary listing...

- ✓ Free listing on www.GSP9700.com
- ✓ Tens of thousands of hits each year
- ✓ Customers find you

**Locate a GSP9700  
Road Force® Balancer**



## Let us advertise FOR YOU!

### Your Shop Name

Street Address

City, State Zip/Post Code

Phone number

Approx. X mi/km from your location



## Popular equipment upgrades

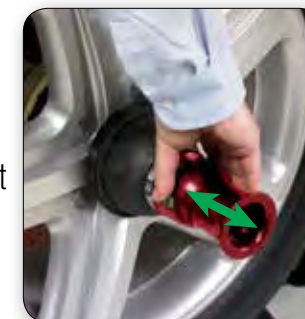
### Wheel lift

- ✓ Safely service heavy, oversized wheels
- ✓ Precisely center all wheels



### SpeedClamp

- ✓ Clamp wheels automatically
- ✓ Save time and effort
- ✓ Eliminate wingnut



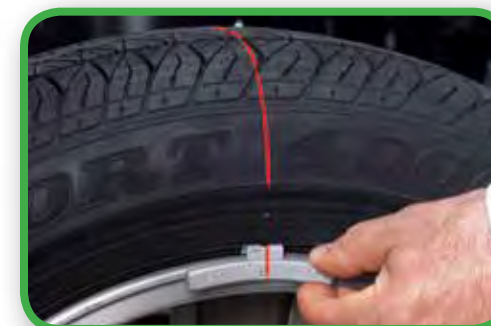
**PATENTED**

### HammerHead® top-dead-center laser

- ✓ Greater weight placement accuracy to avoid mistakes
- ✓ More single-spin balances improve productivity
- ✓ Overhead fluorescent light illuminates work area



**Incorrect**



**Correct**



Additional features make balancing faster and easier



Live 3D graphics



Bottom laser and wheel light



Most durable shaft in the industry



Integrated Inflation Station



Servo Stop drive control

Automatically rotates and holds wheel at top-dead-center or bottom-dead-center weight locations.



TranzSaver™

Compares tire circumferences as specified by OEMs to prevent damage to All Wheel Drive (AWD) vehicles.

On-screen instruction makes everyone an expert!

High-definition videos instruct on a variety of balancing and tire changing topics.

- ✓ Covers basic techniques to more advanced procedures
- ✓ Instant access, easy navigation
- ✓ On-site training for your technicians



Technicians are guided with helpful tips and timesaving procedures.

Printer kit with storage shelf\*

- ✓ Print Road Force Measurement® test results
- ✓ Win more approvals with clear and informative printouts

\* Printer model may vary.





# Specifications



**VAS6230BE4 shown  
with options**

## Power Requirements

196-253V, 10 amp, 50/60 Hz, 1 ph (Power cable includes: NEMA 20 amp plug, L6-20P)

## Air Supply Requirements

7-12 bar (100-175 psi)

## Roller Force

Variable up to 567 kg (1,250 lbs)

## Capacity

**Rim Width** 38 mm to 521 mm (1.5 in to 20.5 in)

**Rim Diameter** 254 mm to 762 mm (10 in to 30 in)\*

**ALU** 356 mm to 1118 mm (14 in to 44 in)\*

**Max. Tire Diameter** 1016 mm (40 in)

**Max. Tire Width** 508 mm (20 in)

**Max. Tire Weight** 79 kg (175 lbs)

**Radial and Lateral Runout Accuracy** 0.051 mm (0.002 in)

**Imbalance Resolution** ± 0.28 g (0.01 oz)

**Placement Accuracy** 512 positions, ± 0.35°

**Balancing Speed**

300 rpm

## Motor

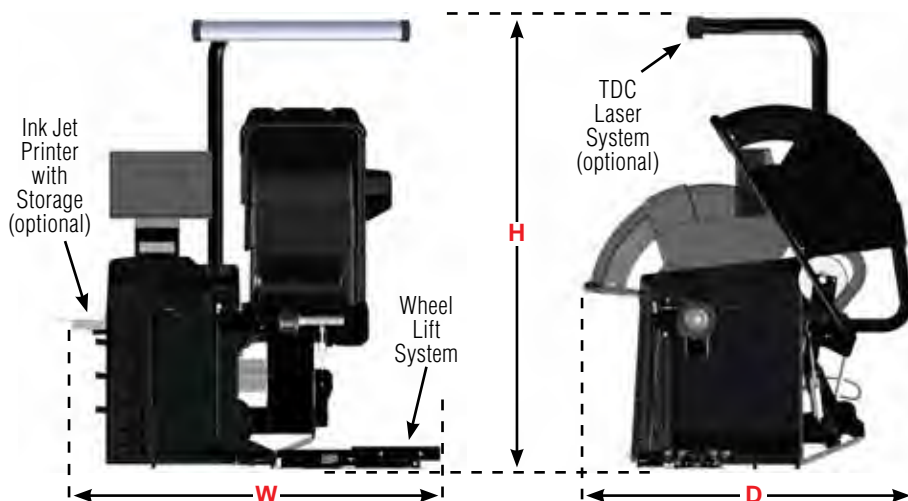
Programmable drive system and DC motor

\* Extreme wheel sizes may require manual data entry.

# Models\*\*

	RFE30VAGE	RFE10VAGE
Wheel Lift System	✓	✓
SpeedClamp™ System	✓	
Width (W)	1626 mm (64 in) 1651 mm (65 in) with optional printer 1702 mm (67 in) with wheel lift 1854 mm (73 in) with wheel lift and printer	1626 mm (64 in) 1651 mm (65 in) with optional printer 1702 mm (67 in) with wheel lift 1854 mm (73 in) with wheel lift and printer
Height (H)	1778 mm (70 in) 2261 mm (89 in) with optional TDC Laser System	1778 mm (70 in) 2261 mm (89 in) with optional TDC Laser System
Depth (D)	1600 mm (63 in)	1600 mm (63 in)
Weight	395 kg (871 lbs)	395 kg (871 lbs)

\*\* Road Force® Elite model numbers are trademarks of Hunter Engineering Company.



**Because of continuing technological advancements, specifications, models and options are subject to change without notice.**

**HUNTER**  
Engineering Company  
[www.hunter.com](http://www.hunter.com)

0417AHE